


The Rough Guide to Shoreline Management Plans – what are they & why are we reviewing them now?




Topics covered



2. Why are we updating them now?



1. What is a Shoreline Management Plan & why do we need them?



3. What does this mean for Poole & Christchurch?

What is a Shoreline Management Plan?

- A broad-scale strategic assessment of flood and erosion risks at the coast.



What is a Shoreline Management Plan?



‘SMP sets highest level policy for flood and erosion risk management’



Why do we need SMPs?

To help us understand how:

- shorelines respond to waves, tides and human influences
- shorelines will respond to climate change in the longer-term
- to plan for flooding from storms
- to plan for erosion of cliffs and beaches

And also:

- to support decision-making by Local Authorities
- to help inform local strategies & plans

The SMP approach

Partnership:

- Local Authorities, Environment Agency, County Councils plus other important stakeholders

Assessments:

- Identifying how the physical coast could change
- Identifying what's at risk
- Identifying everybody's objectives

Policy setting:

- No Active Intervention
- Hold the Line
- Advance the line
- Managed Realignment

Time:

Assess the next 100 years, using 3 time divisions:

- 0 – 20 years, 20 – 50 years & 50 – 100 years

Flood & erosion risk



How does it vary in space and time?

How can we harness it to manage the coast in a better way?



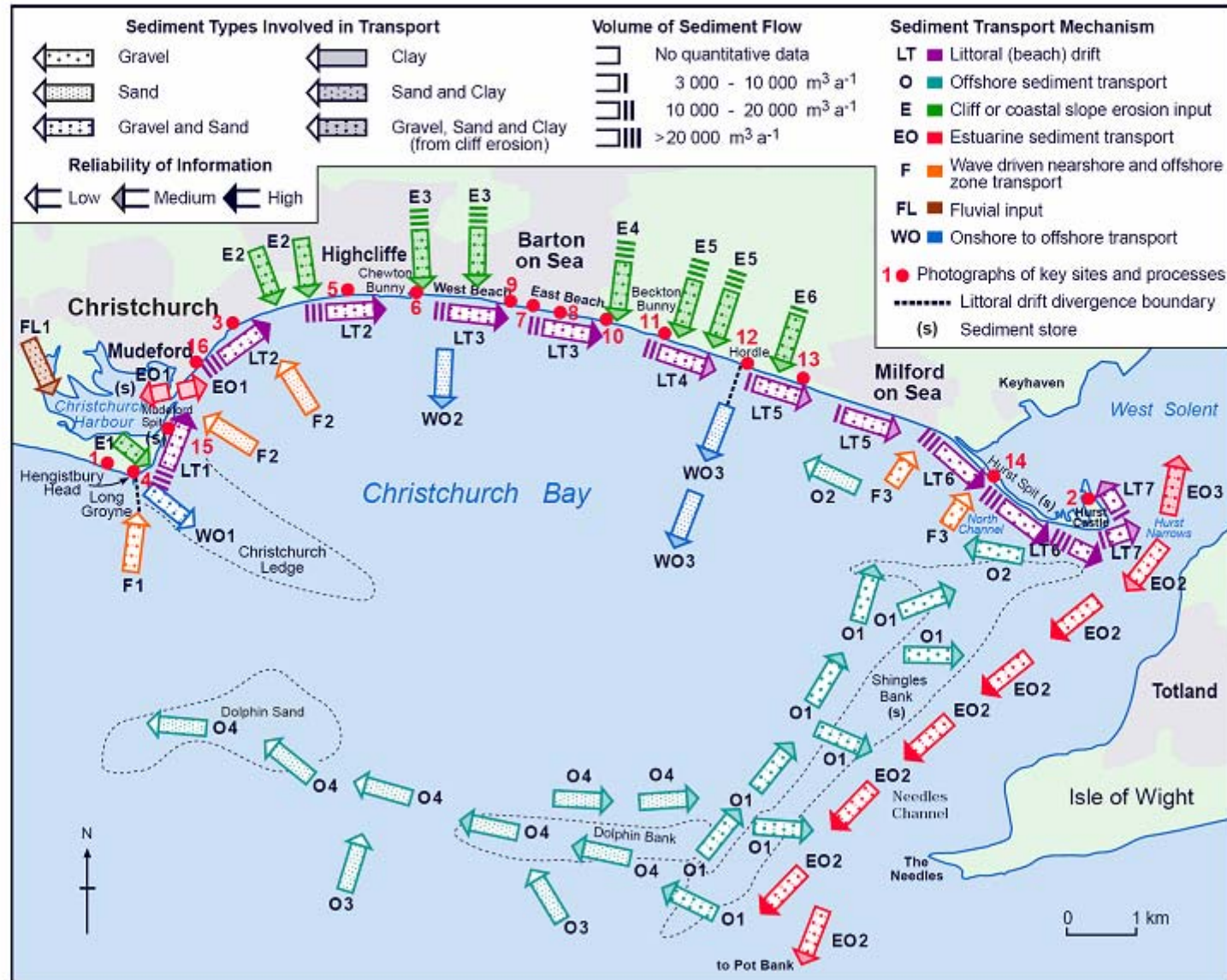
Coast protection & sea defences



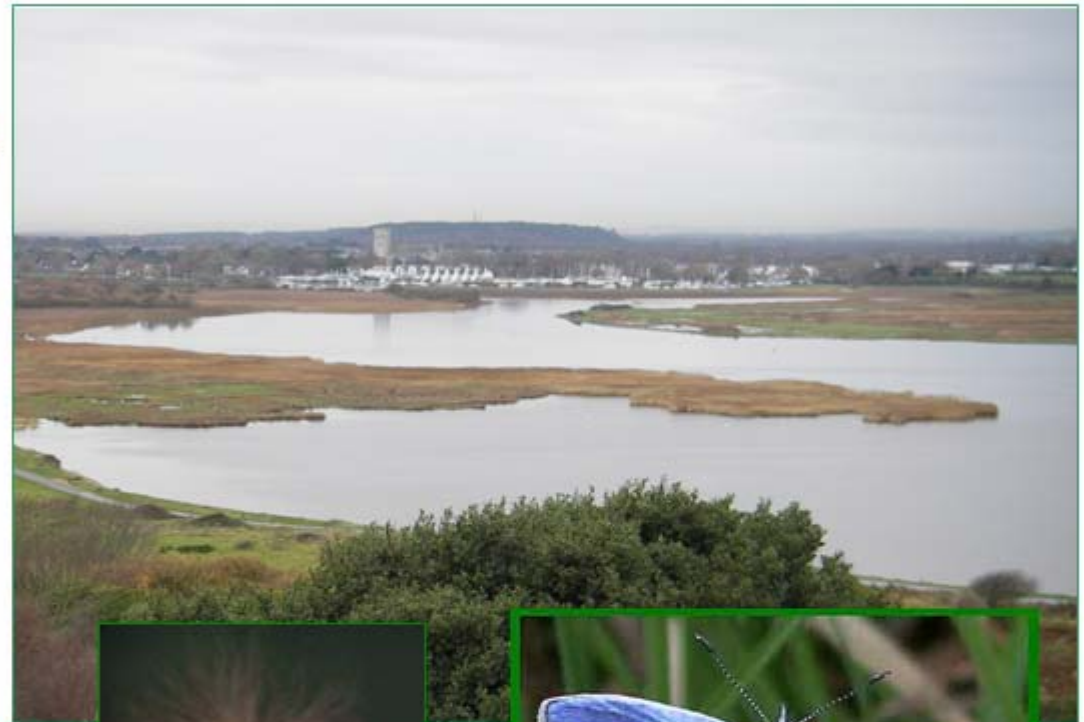
Where are they; how do they influence policy development?



Do we understand how waves and currents move the sand?



- Effects on the natural environment, including protected species, designated habitats and sites of special scientific interest.
- Co-operation with organisations such as Natural England, the RSPB and the Wildlife Trusts.



The historic environment



ROYAL HASKONING

- Scheduled monuments, listed buildings and structures, archaeological sites and the historic human landscape.

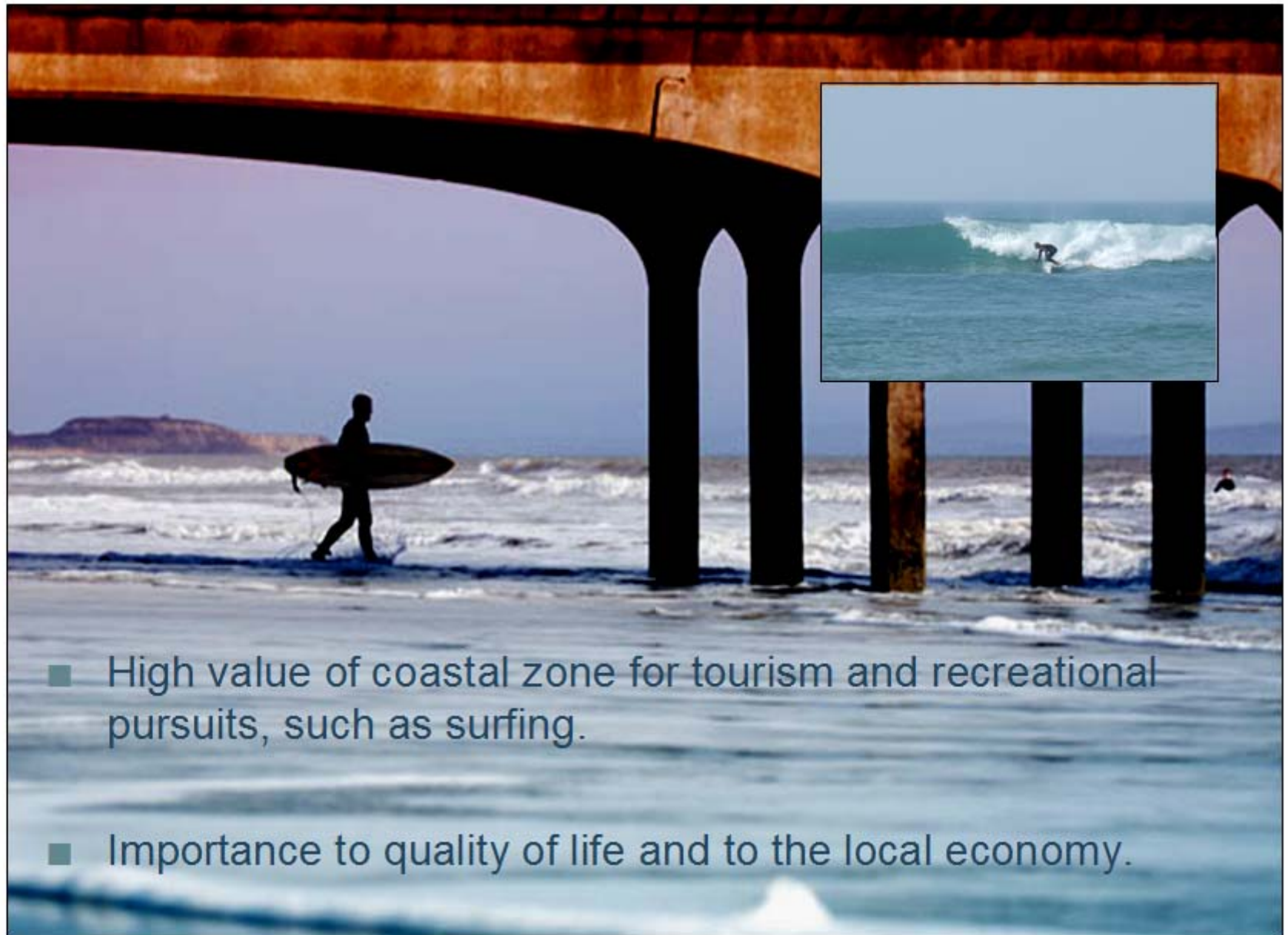


ENGLISH HERITAGE




THE
NATIONAL
TRUST



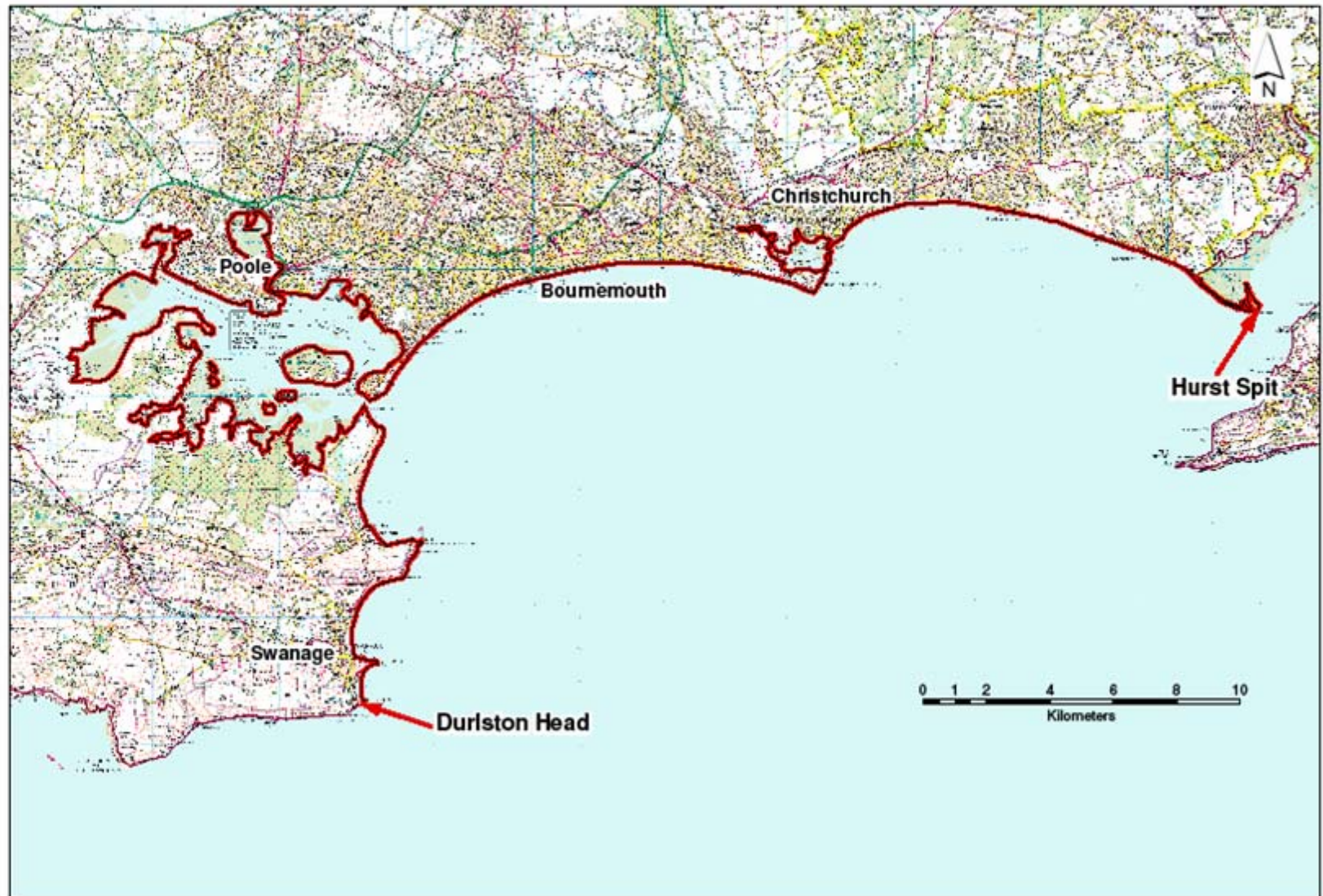


- High value of coastal zone for tourism and recreational pursuits, such as surfing.
- Importance to quality of life and to the local economy.

So why are we updating Shoreline Management Plans now?

- 
- Availability of new local strategies and plans
 - New coastal monitoring programmes & initiatives
 - Improved knowledge of climate change and the impacts
 - Wider community awareness of climate change
 - Political emphasis on longer-term planning

Christchurch & Poole Bays SMP frontage



Issues for the Poole & Christchurch frontage

- Harbour entrance and navigation channel dredging at Poole and Christchurch
- Sea level rise at Sandbanks & Brownsea Island
- Sand movement at Studland



Issues for the Poole & Christchurch frontage

- Cliff recession at Barton-on-Sea
- Breach potential at Hengistbury Head & Hurst Spit
- Beach replenishment



Outcomes for Poole & Christchurch

- Identification of all features at risk now and in the future
- Consideration of all the issues raised by public and stakeholders
- Agreement of new policies for management of flood and erosion risks
- A fully reviewed SMP in place for Poole & Christchurch by March 31st 2010