

Our Natural Coast

Richard Caldow
Maritime Adviser

Presentation structure



- Why is our coast like it is?
- What natural assets do we have on our coast?
- What issues arise from coastal management?
- What do we need from this review?

Why is our coast like it is?



Underlying geology

Why is our coast like it is?



Natural coastal processes



Why is our coast like it is?

NATURAL
ENGLAND

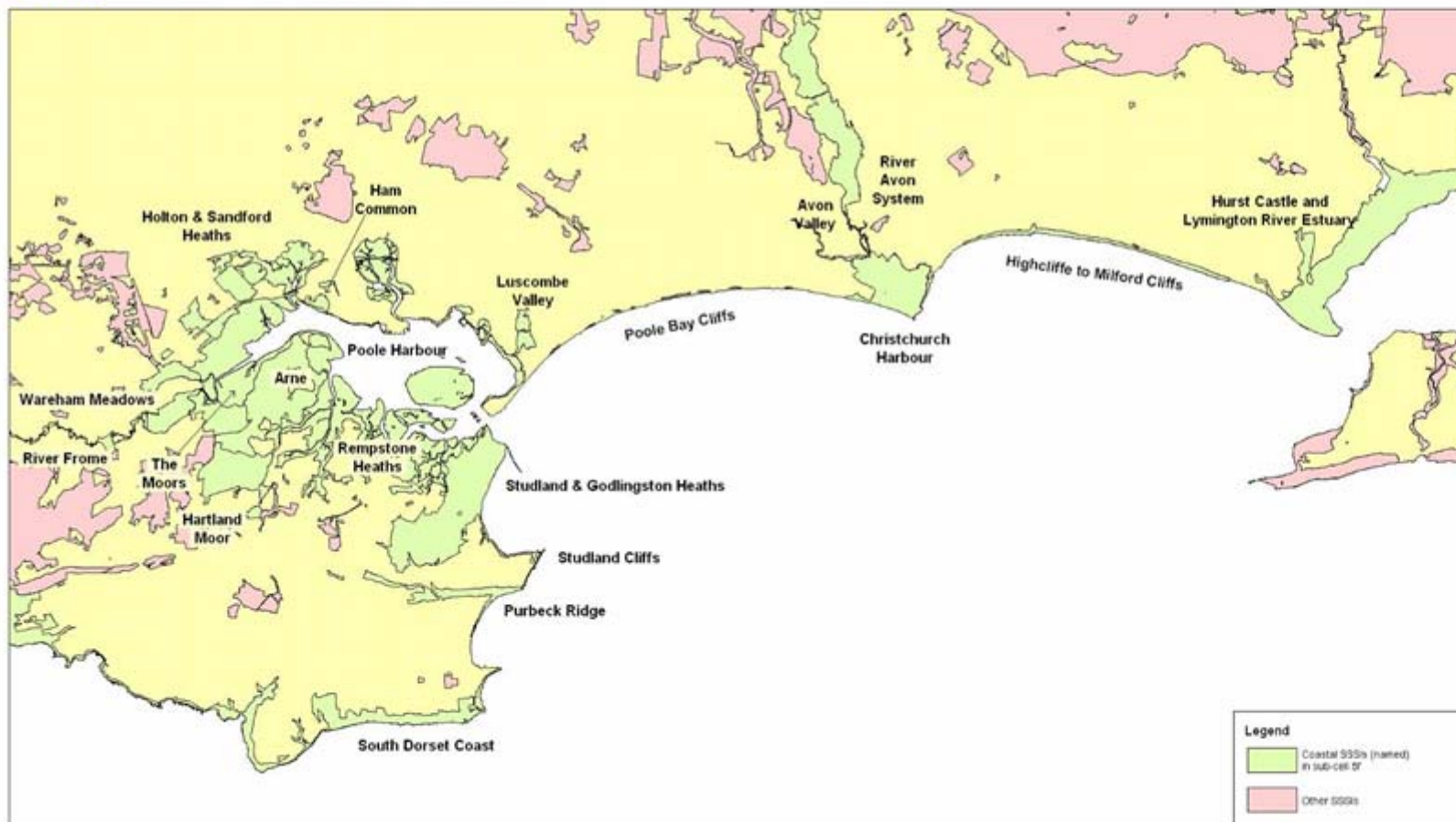
Intervention by mankind



What natural assets do we have on our coast?

SMP 2: Hurst Spit - Durlston

Sites of Special Scientific Interest



Scale 1:125000

Drawn by: H Avery
Date: 9/10/2007
Ref: 1212208700
© Natural England 2007



Natural England
Somerset & Dorset
Siepe Farm
Aime
Wareham
Dorset
BH20 5BW

This study is based upon Delbanco survey material with the permission of Delbanco survey in behalf of the Committee of the Ministry of Statistics, Service & Census, copyright. All Rights Reserved. Unauthorized reproduction or copying (even for nonprofit use) may lead to prosecution or civil proceedings. Source Number: 1999-0001, 181

What natural assets do we have on our coast?



- 20 Sites of Special Scientific Interest
- 4 Special Protection Areas
- 4 Ramsar sites
- 5 Special Areas of Conservation
- 7 National Nature Reserves
- 10 (at least) Local Nature Reserves

PLUS.....

- **Areas of Outstanding Natural Beauty (AONB), Heritage Coasts, World Heritage Site (Jurassic Coast), National Parks, Sites of Nature Conservation Interest (SNCI), Regionally Important Geological Sites (RIGS), Sensitive Marine Areas, Voluntary Marine Nature Reserves, Geological Conservation Review Sites, Wildlife Trust Reserves, Other reserves (eg RSPB)**

National and International legislation

What natural assets do we have on our coast?



Purbeck Ridge (East)

Geology

Rare plants

Scarce coastal
habitats



Studland Cliffs

Geology

Geomorphology

Coastal grassland



Poole Harbour

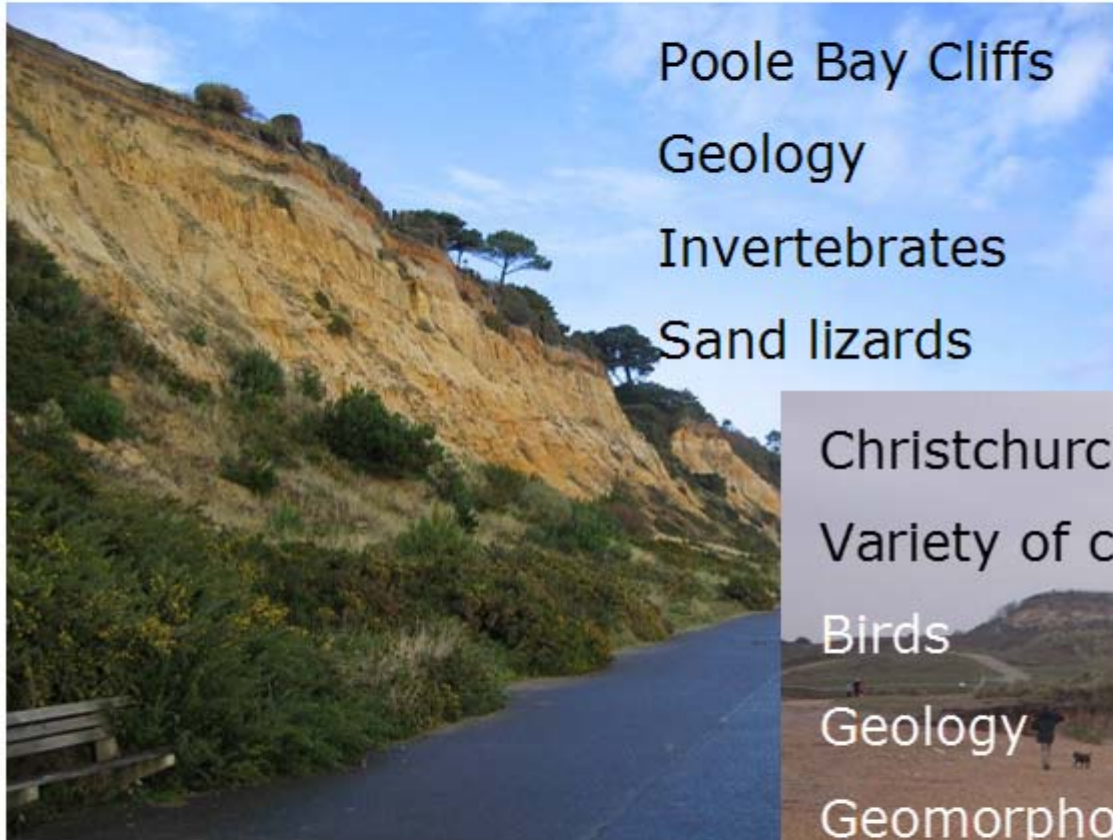
Variety of coastal
habitats

> 20,000 birds

Scarce invertebrates



What natural assets do we have on our coast?



Poole Bay Cliffs
Geology
Invertebrates
Sand lizards



Christchurch Harbour
Variety of coastal habitats
Birds
Geology
Geomorphology
Archaeology

What issues arise from coastal management?



Coastal defences that are no longer economically justifiable



What issues arise from coastal management?



Development in inappropriate locations



What issues arise from coastal management?



Interruption to sediment supplies along the coast.



What issues arise from coastal management?



Coastal squeeze against hard defences



What issues arise from coastal management?



Stabilised cliffs adversely affecting special interest features



What issues arise from coastal management?



Damage to fragile coastal habitats eg vegetated shingle communities

What issues arise from coastal management?



Freshwater & brackish habitats protected behind coastal defences



Brownsea Lagoon

Wareham Meadows

What issues arise from coastal management?

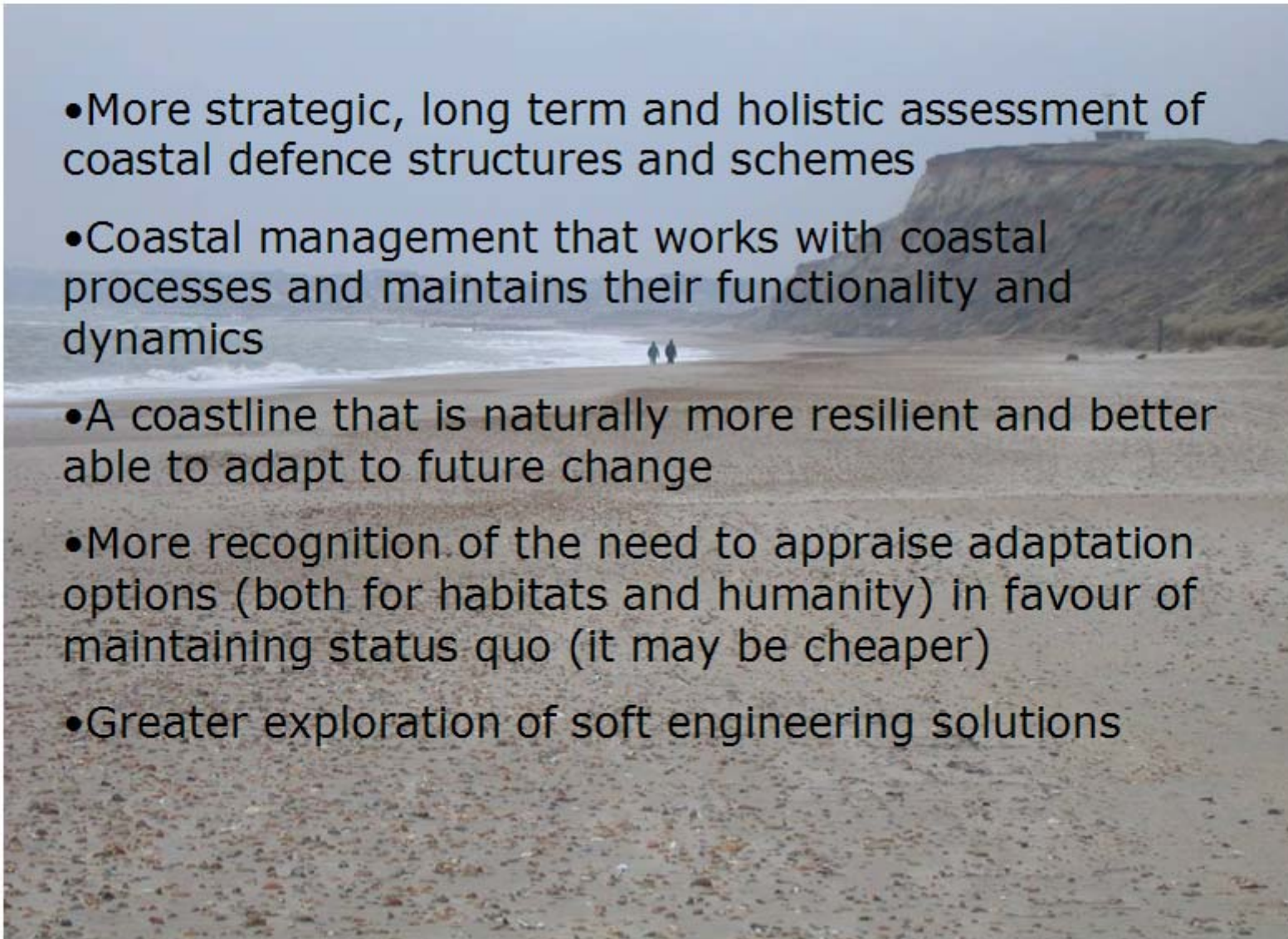


SSSI Name	Habitat	Issue	Units in unfavourable condition
Highcliffe to Milford Cliffs	Soft cliffs	Inappropriate coastal management	4
Hurst Castle & Lymington River	Intertidal with saltmarsh & shingle	Coastal squeeze	4
Poole Bay Cliffs	Cliff exposures with coastal grass & heath	Earth science features obscured by scrub on stabilised slopes	5
Poole Harbour	Grazing marsh	Inappropriate coastal management	1
Studland & Godlingston Heath	Dune heath & woodland	Coastal squeeze	1
Wareham Meadows	Marshy grassland	Inappropriate water levels (due to tidal banks)	2

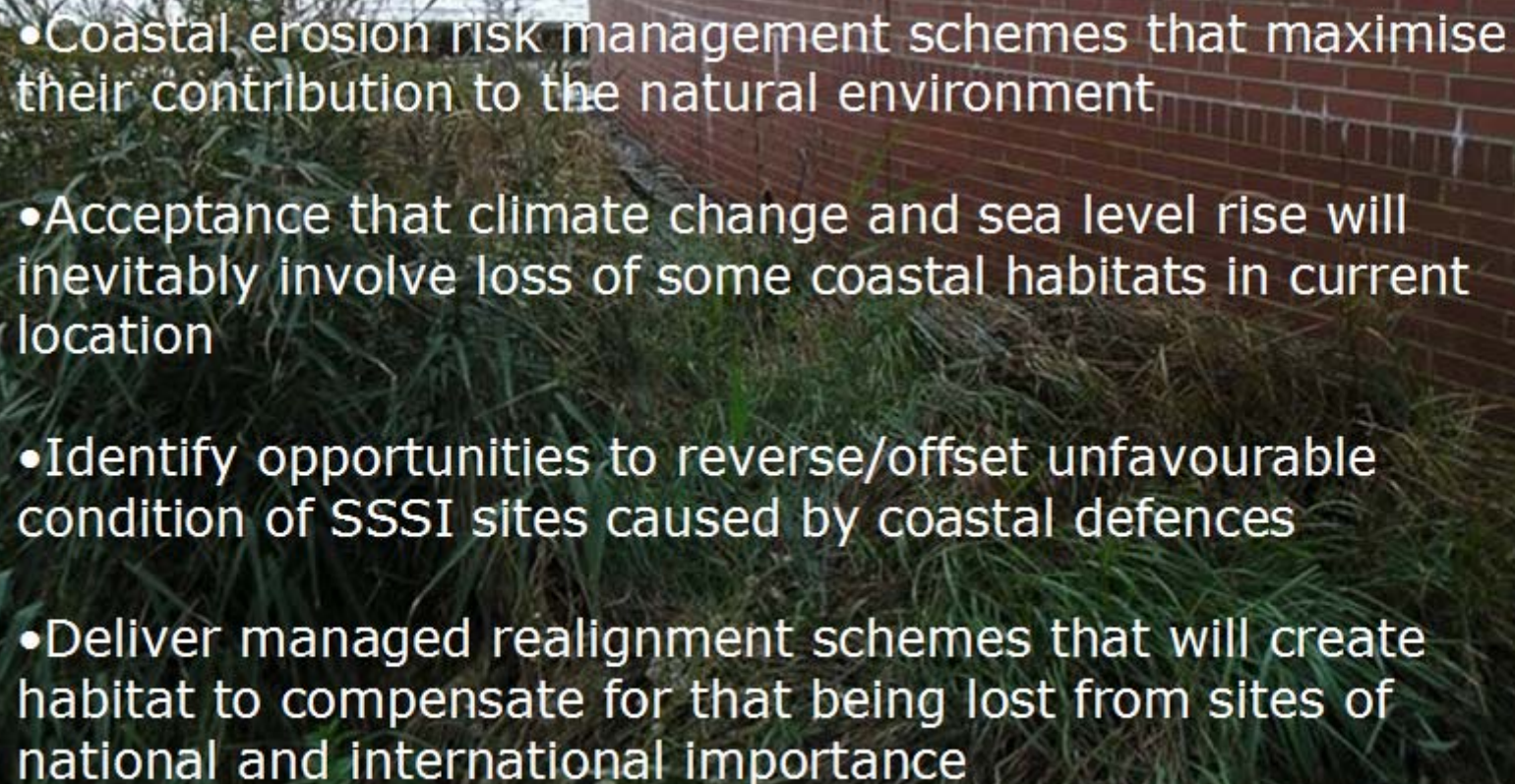
What do we need from this review?



- More strategic, long term and holistic assessment of coastal defence structures and schemes
- Coastal management that works with coastal processes and maintains their functionality and dynamics
- A coastline that is naturally more resilient and better able to adapt to future change
- More recognition of the need to appraise adaptation options (both for habitats and humanity) in favour of maintaining status quo (it may be cheaper)
- Greater exploration of soft engineering solutions



What do we need from this review?

- 
- Coastal erosion risk management schemes that maximise their contribution to the natural environment
 - Acceptance that climate change and sea level rise will inevitably involve loss of some coastal habitats in current location
 - Identify opportunities to reverse/offset unfavourable condition of SSSI sites caused by coastal defences
 - Deliver managed realignment schemes that will create habitat to compensate for that being lost from sites of national and international importance