

Halcrow



00092188

## **Halcrow Maritime**

Poole and Christchurch Bays

Shoreline Management Plan

Volume 4 - Maps and Supporting Information

Consultation Draft

March 1999



HALCROW GROUP LTD  
BURDEROP PARK LIBRARY

**Halcrow**



## **Halcrow Maritime**

Poole and Christchurch Bays

Shoreline Management Plan

Volume 4 - Maps and Supporting Information

Consultation Draft

March 1999

### **Halcrow Maritime**

Burderop Park Swindon Wiltshire SN4 0QD

Tel +44 (0)1793 812479 Fax +44 (0)1793 812089

[www.halcrow.com](http://www.halcrow.com)

Halcrow Maritime has prepared this report in accordance with the instructions of their client for their sole and specific use. Any other persons who use any information contained herein do so at their own risk.

© Halcrow Group Ltd 1999



## PREFACE

This is the Consultation Draft of the Poole and Christchurch Bays Shoreline Management Plan. It sets out the strategy for management of coastal defences between Durlston Head in Dorset and Hurst Spit in Hampshire, including Poole and Christchurch Harbours (Subcell 5F). The SMP has been prepared by Halcrow Maritime on behalf of the Poole and Christchurch Bays Coastal Group.

The SMP is divided into the following 4 volumes:

### VOLUME 1 – STRATEGY DOCUMENT

#### PART A : INTRODUCTION

Sets out the background to, and role of, the SMP, along with its aims and objectives.

#### PART B : HOW TO USE THE PLAN

Describes the key elements of strategy presentation, in the Process and Management Unit sections.

#### PART C : PROCESS UNIT DESCRIPTIONS

Present a synopsis of the main characteristics of each Process Unit, summarised from Volumes 2 and 3.

#### PART D : MANAGEMENT UNIT STATEMENTS

Divided into two sections, Part D1 presents the 'Management Unit Characteristics' and Part D2 the 'Appraisal of Strategic Options' which identifies the preferred option along with implementation and monitoring guidance.

#### PART E : FUTURE DEVELOPMENT

Describes where/how current understanding needs to be improved and gives a suggested time frame for both the review of the strategies and, further into the future, for a more comprehensive reappraisal of the Plan as a whole.

### VOLUME 2 – PHYSICAL ENVIRONMENT

#### PART A : GEOLOGY AND GEOMORPHOLOGY

Presents the physical characteristics of the shoreline along with its the formative geomorphological history, and describes the subdivision of the coast into Process Units.

#### PART B : COASTAL CONDITIONS

Describes the wind, wave, tide and current regimes driving contemporary coastal processes.

#### PART C : SHORELINE EVOLUTION

Identifies and reviews historical evolution of the shoreline, both 'natural' and due to Mans intervention.

#### PART D : CONCEPTUAL SEDIMENT PROCESS MODELS

Provides qualitative and quantitative information about sediment processes within Poole and Christchurch Bays, in addition to setting longer term assessments of how the coast is likely to be impacted upon.

#### ANNEX A : ISSUES ANALYSIS AND STATEMENT OF OBJECTIVES

Presents shoreline management issues and associated objectives, relevant to the Physical Environment of the coast, identified during public consultation on the SMP.

## VOLUME 3 – DEVELOPED AND NATURAL ENVIRONMENT

### PART A : COASTAL DEFENCES

Examines the current state of knowledge of coastal defences, and where possible reviews the nature and standard of defence provided, and their suitability to provide the standards required in the future.

### PART B : DEVELOPED ENVIRONMENT

Human use of the shoreline is assessed through descriptions of land use, coastal activities, offshore use and archaeological interest, and requirements for coastal defence planning.

### PART C : NATURAL ENVIRONMENT

Reviews landscape, habitat and earth science conservation value of the shoreline, and the key issues relating to coastal defence provision.

### PART D : PLANNING

Detail present planning procedures and sets out existing policies and objectives, of both statutory and non-statutory plans, of relevance to coastal defence.

### PART E : LIST OF RELEVANT DOCUMENTS

A bibliographical listing of those documents/sources used during the production of the SMP.

### ANNEX A : ISSUES ANALYSIS AND STATEMENT OF OBJECTIVES

Presents shoreline management issues and associated objectives, relevant to the Developed and Natural Environment of the coast, identified during public consultation on the SMP.

## VOLUME 4 – MAPS AND SUPPORTING INFORMATION

*Maps presented in Parts A to D are at 1:25,000 scale.*

### PART A : DEVELOPED ENVIRONMENT MAPS

These base maps illustrate the land use of the area, categorised into ten classifications.

### PART B : CONSERVATION MAPS

Includes details of all international, national and local conservation designations, whether statutory or non-statutory. Archaeological and historical features of a terrestrial and maritime nature are also depicted.

### PART C : COASTAL DEFENCES

The extent and nature of all forms of coastal defence have been mapped.

### PART D : PHOTOGRAPHS

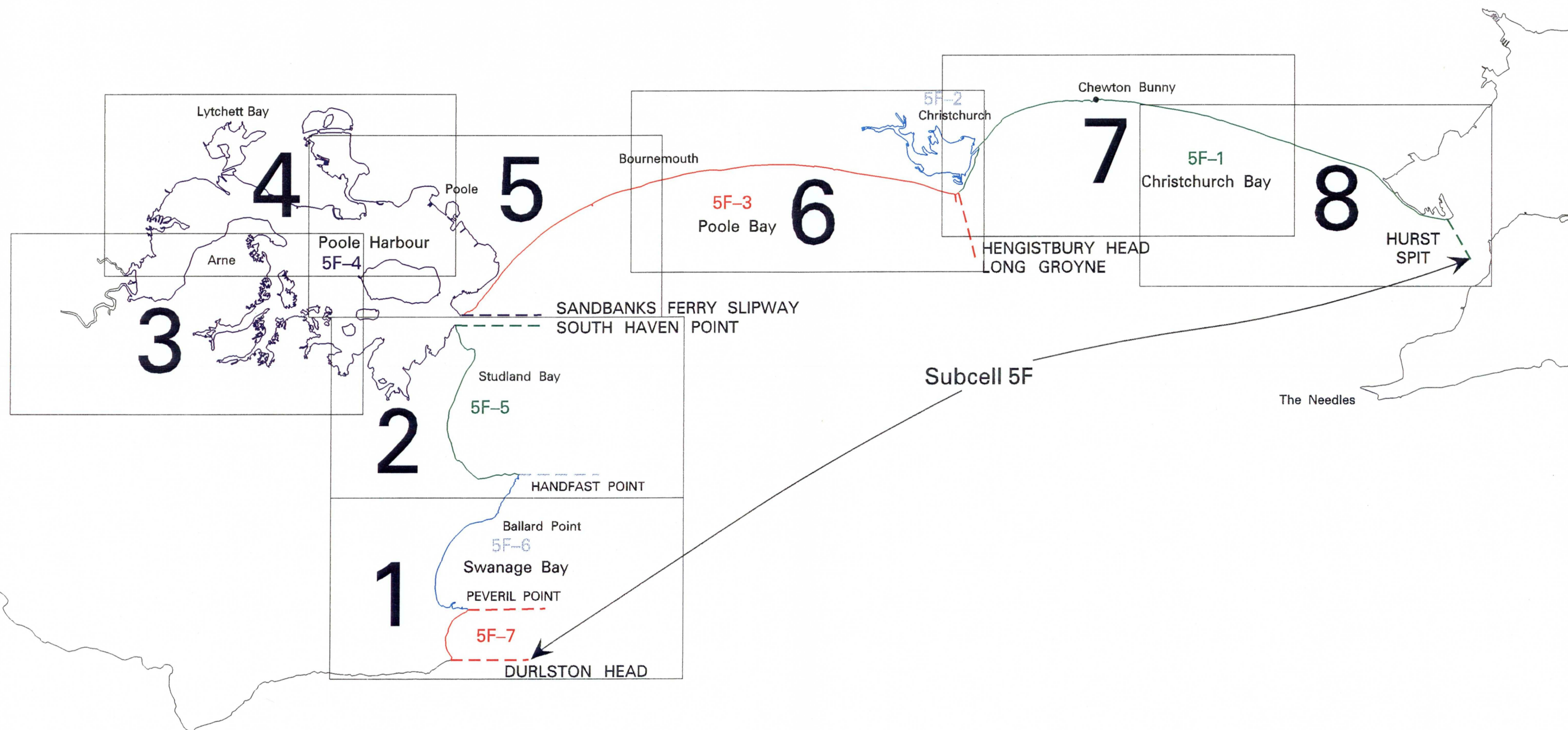
A series of photographs representative of each Process Unit.

A consistent **page numbering** style has been used throughout Volumes 1 to 3, as follows:

**Volume – Part Page.**

For example, 1-A4 is Volume 1 Part A Page 4.





1

Map Location and Number



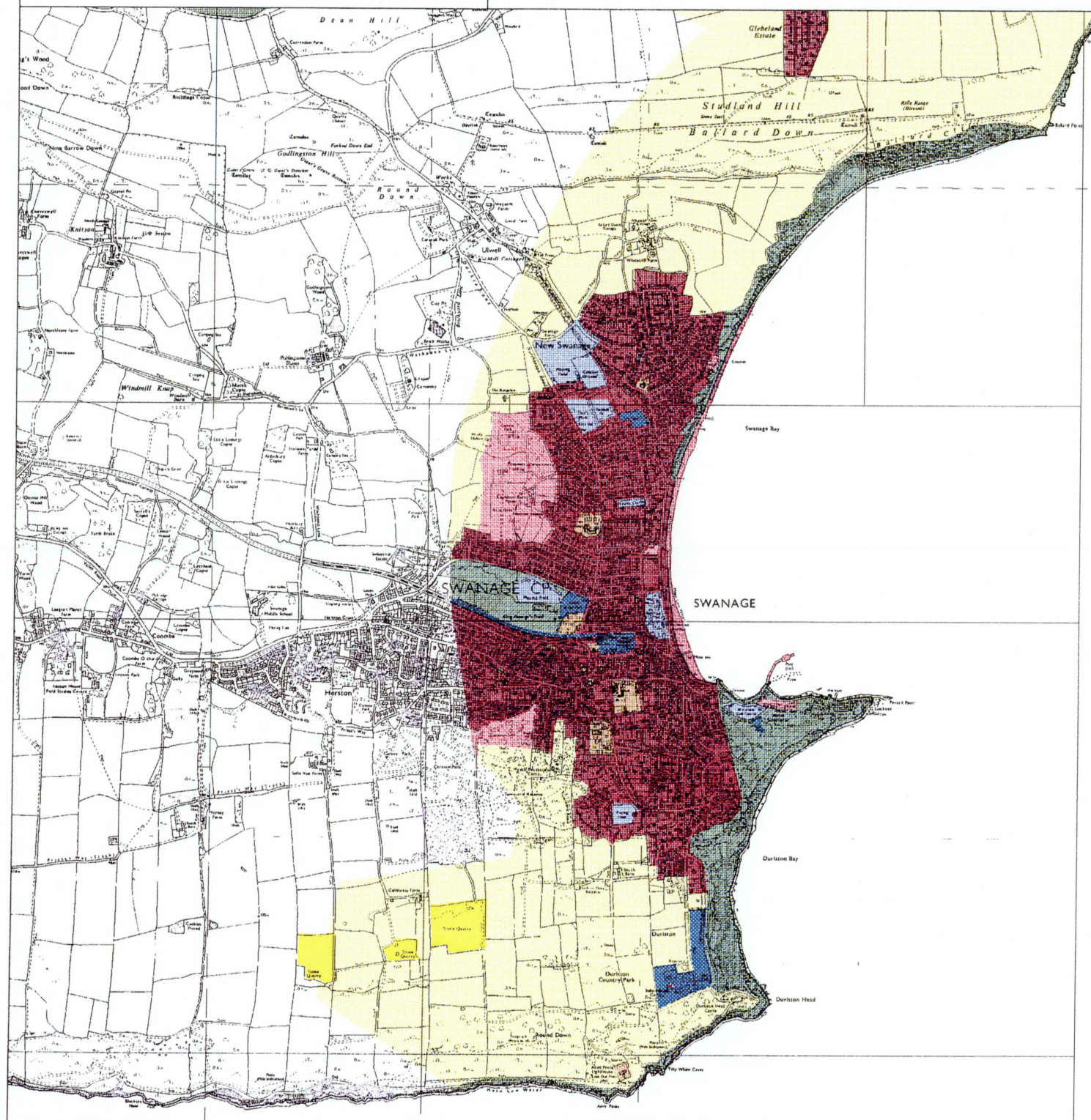
Reproduced from the Ordnance Survey 1:50,000 sheets with the permission of the Controller of Her Majesty's Stationery Office. (c) Crown Copyright



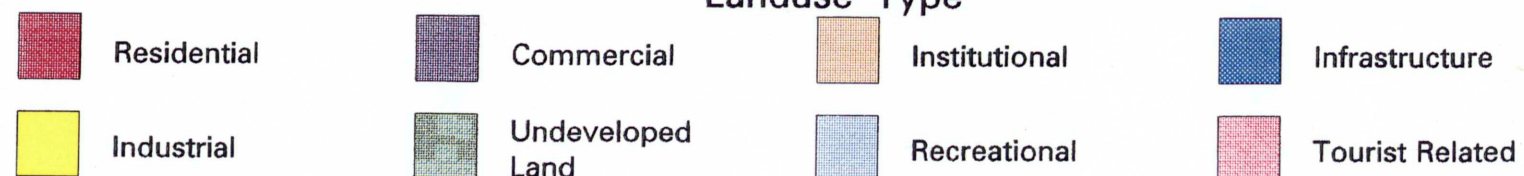
A large, light blue, curved shape that starts from the bottom left and sweeps upwards and to the right, ending near the top right corner. It has a soft, painterly texture.

## **Developed Environment Maps**

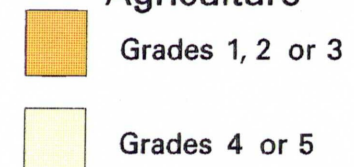




**Landuse Type**



**Agriculture**



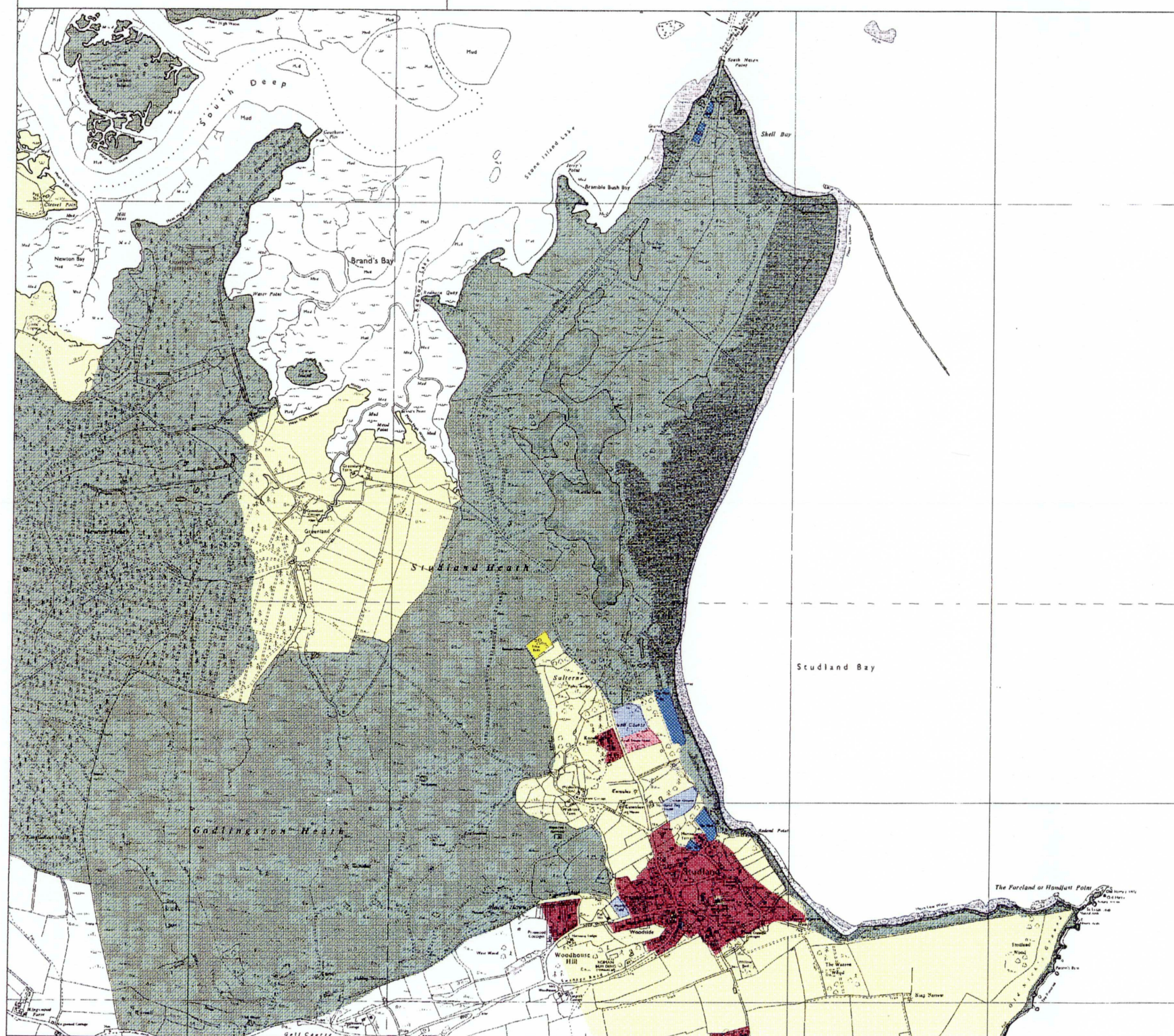
0 SCALE = 1:25,000 1km





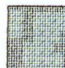
Map 1 of 8

Reproduced from the Ordnance Survey 1:50,000 sheets with the permission of the Controller of Her Majesty's Stationary Office (c) Crown Copyright







**Landuse Type**

 Residential	 Commercial	 Institutional	 Infrastructure
 Industrial	 Undeveloped Land	 Recreational	 Tourist Related

**Agriculture**

 Grades 1, 2 or 3
 Grades 4 or 5

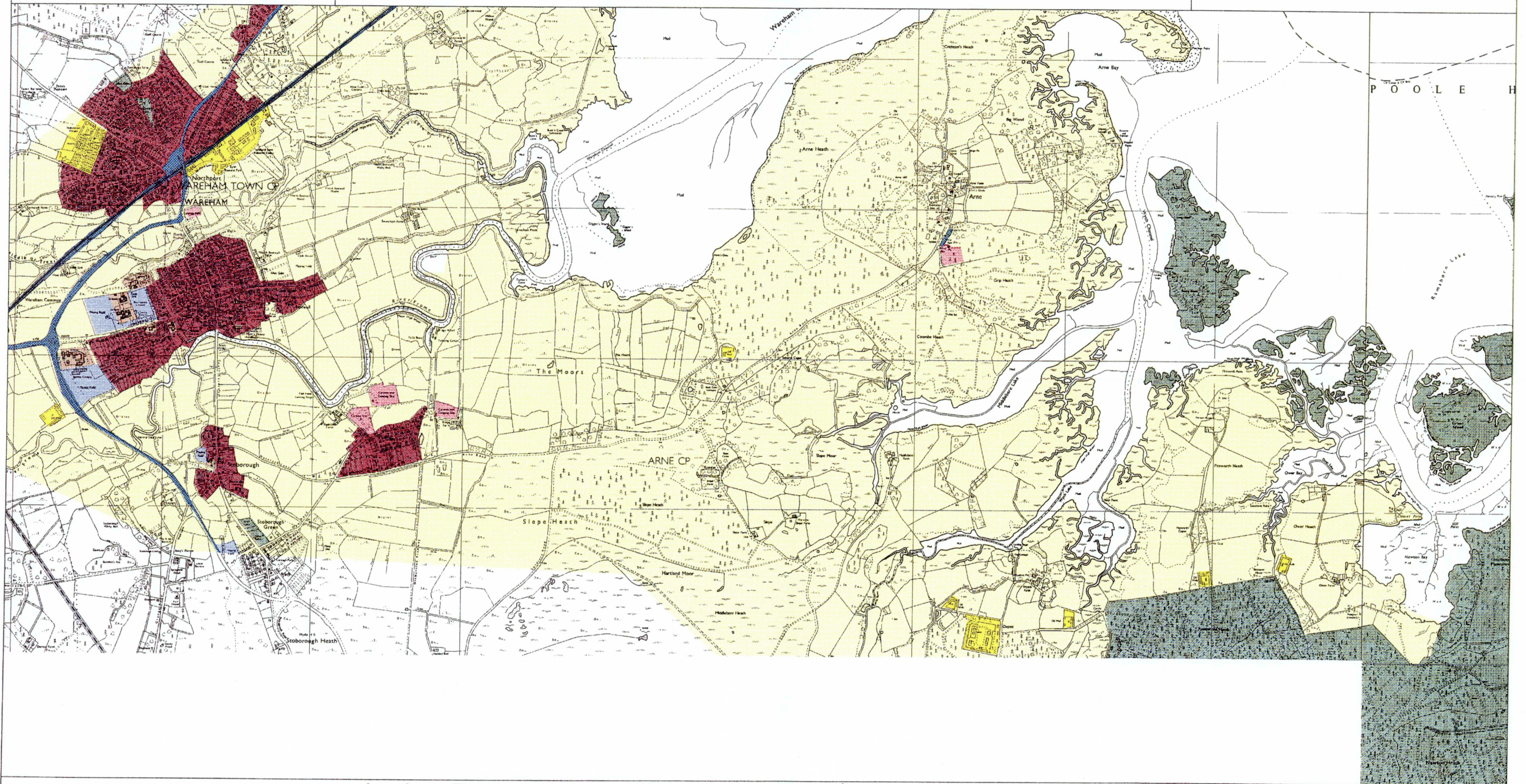
0 SCALE = 1:25,000 1km











Map 2 of 8

Reproduced from the Ordnance Survey 1:25000 sheets with the permission of the Controller of Her Majesty's Stationery Office. © Crown Copyright







**Landuse Type**

 Residential	 Commercial	 Institutional	 Infrastructure
 Industrial	 Undeveloped Land	 Recreational	 Tourist Related

**Agriculture**

 Grades 1, 2 or 3
 Grades 4 or 5

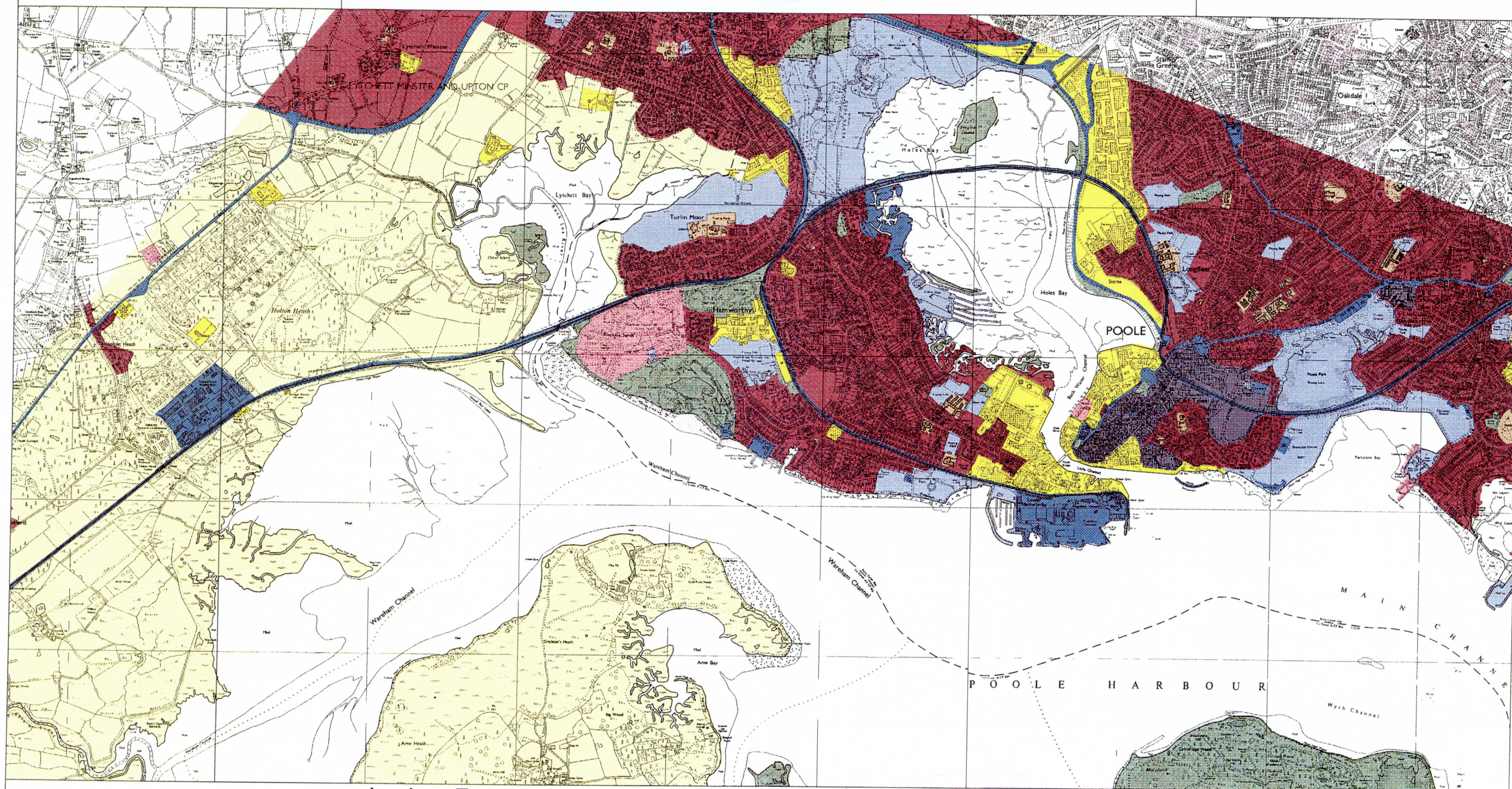
0 SCALE = 1:25,000 1km











Map 3 of 8

Reproduced from the Ordnance Survey 1:50,000 sheets with the permission of the Controller of Her Majesty's Stationery Office. © Crown Copyright







**Landuse Type**

	Residential		Commercial		Institutional		Infrastructure
	Industrial		Undeveloped Land		Recreational		Tourist Related

**Agriculture**

	Grades 1, 2 or 3
	Grades 4 or 5

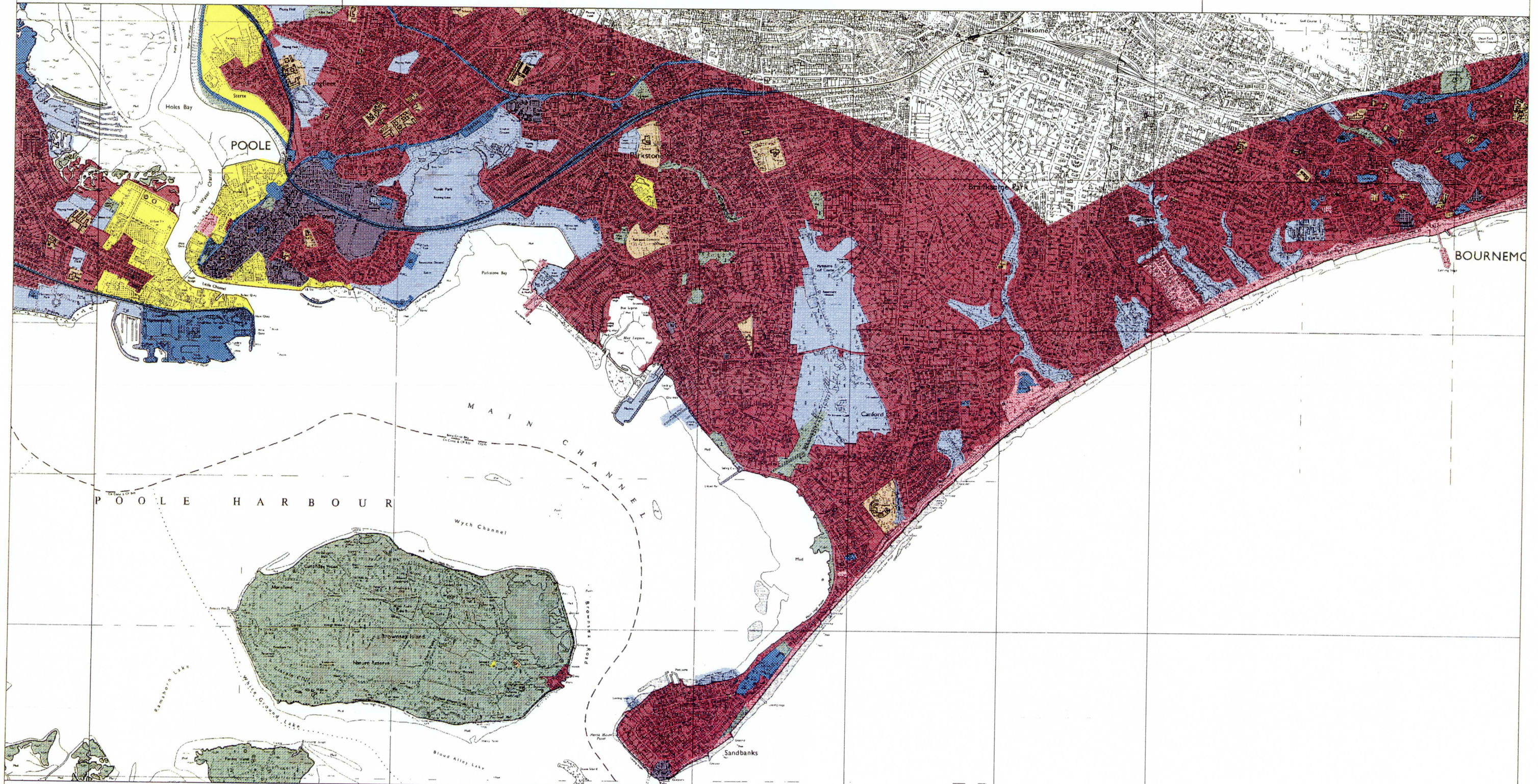
0 SCALE = 1:25,000 1km











Map 4 of 8

Reproduced from the Ordnance Survey 1:25000 sheets with the permission of the Controller of Her Majesty's Stationery Office. © Crown Copyright


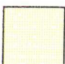




**Landuse Type**

 Residential	 Commercial	 Institutional	 Infrastructure
 Industrial	 Undeveloped Land	 Recreational	 Tourist Related

**Agriculture**

 Grades 1, 2 or 3
 Grades 4 or 5

0 SCALE = 1:25,000 1km











Map 5 of 8

Reproduced from the Ordnance Survey 1:50,000 sheets with the permission of the Controller of Her Majesty's Stationary Office. (c) Crown Copyright


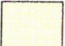


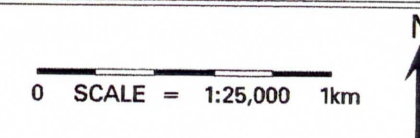


**Landuse Type**

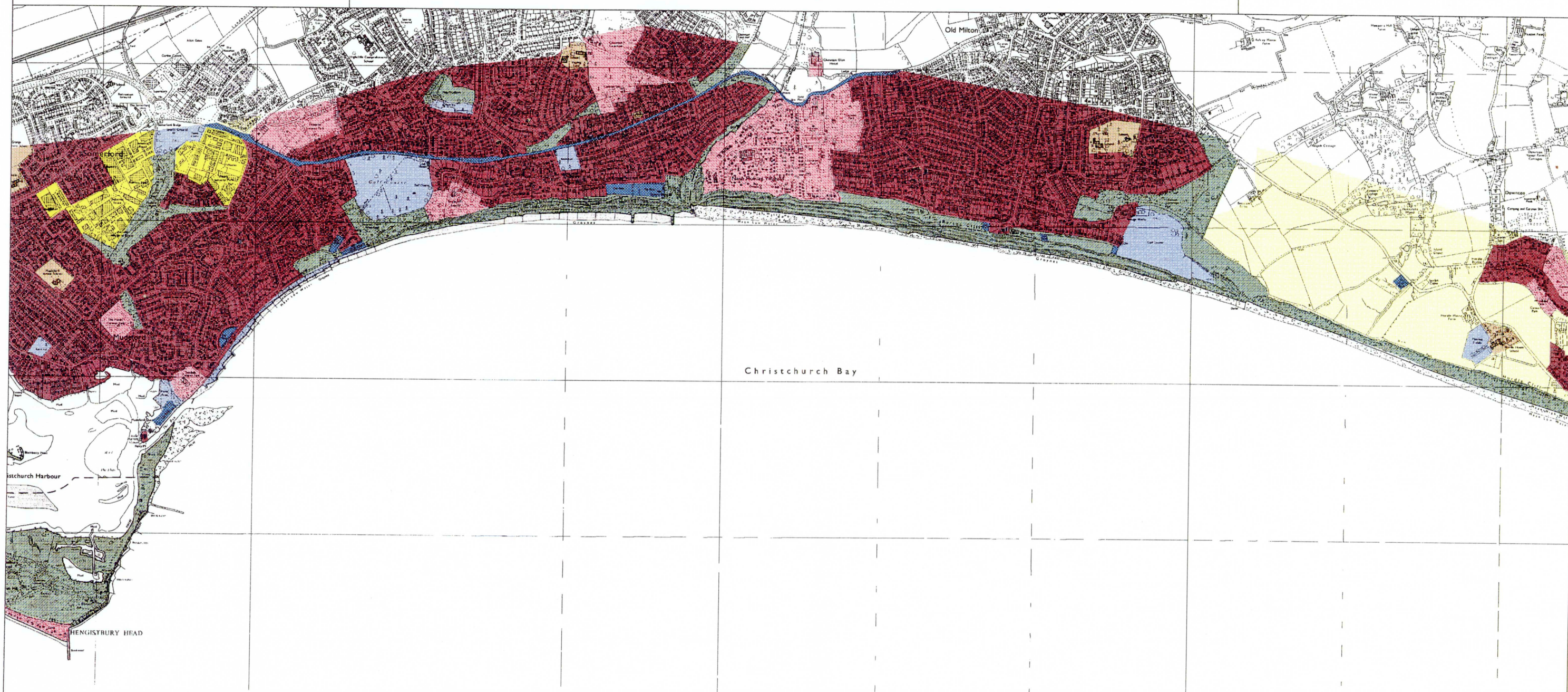
 Residential	 Commercial	 Institutional	 Infrastructure
 Industrial	 Undeveloped Land	 Recreational	 Tourist Related

**Agriculture**

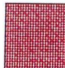




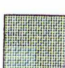


 Grades 1, 2 or 3
 Grades 4 or 5









**Landuse Type**

 Residential	 Commercial	 Institutional	 Infrastructure
 Industrial	 Undeveloped Land	 Recreational	 Tourist Related

**Agriculture**

 Grades 1, 2 or 3
 Grades 4 or 5

0 SCALE = 1:25,000 1km

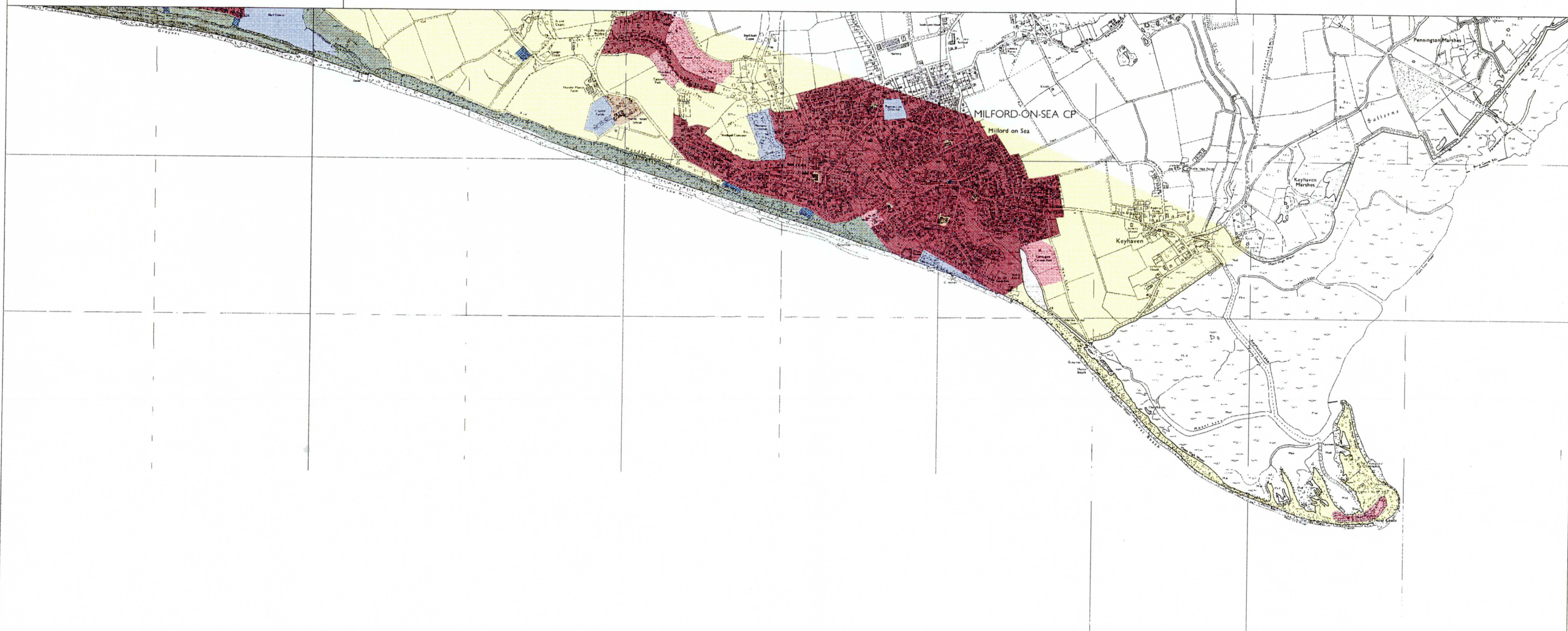


Map 7 of 8

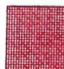



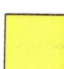



Reproduced from the Ordnance Survey 1:50,000 sheets with the permission of the Controller of Her Majesty's Stationery Office (c) Crown Copyright





POOLE AND CHRISTCHURCH BAYS  
Durlston Head to Hurst Spit (Subcell 5F)  
SHORELINE MANAGEMENT PLAN – STAGE 2  
Landuse



Landuse Type

 Residential	 Commercial	 Institutional	 Infrastructure
 Industrial	 Undeveloped Land	 Recreational	 Tourist Related

Agriculture

 Grades 1, 2 or 3
 Grades 4 or 5

0 SCALE = 1:25,000 1km



Map 8 of 8

Reproduced from the Ordnance Survey 1:25,000 sheets with the permission of the Controller of Her Majesty's Stationery Office. © Crown Copyright